



Management of Urban and Peri-urban Public Forests by the Office national des forêts

Valuable forest areas at our doorstep

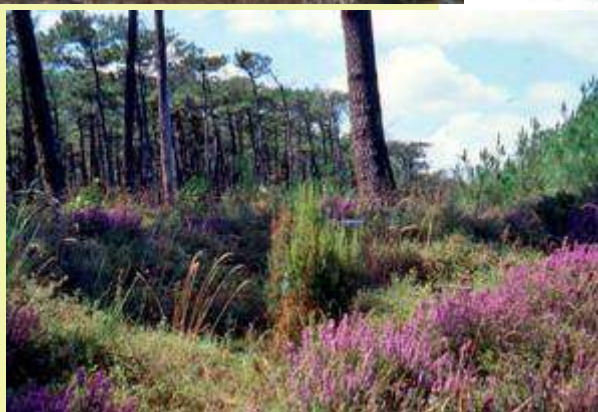
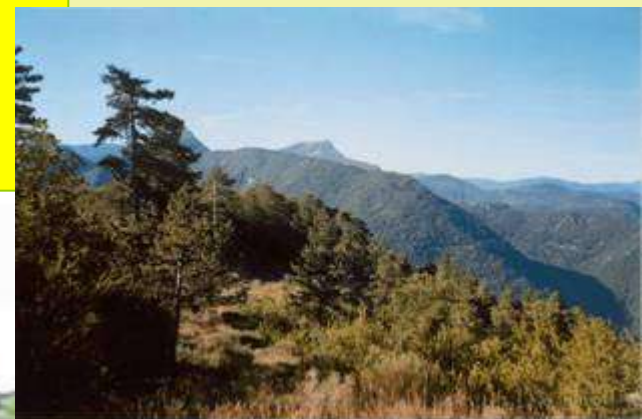
Anne-Marie GRANET, ONF France

A few key points about French Forests

Forest cover : 16 millions of ha

Average forest cover : 28%

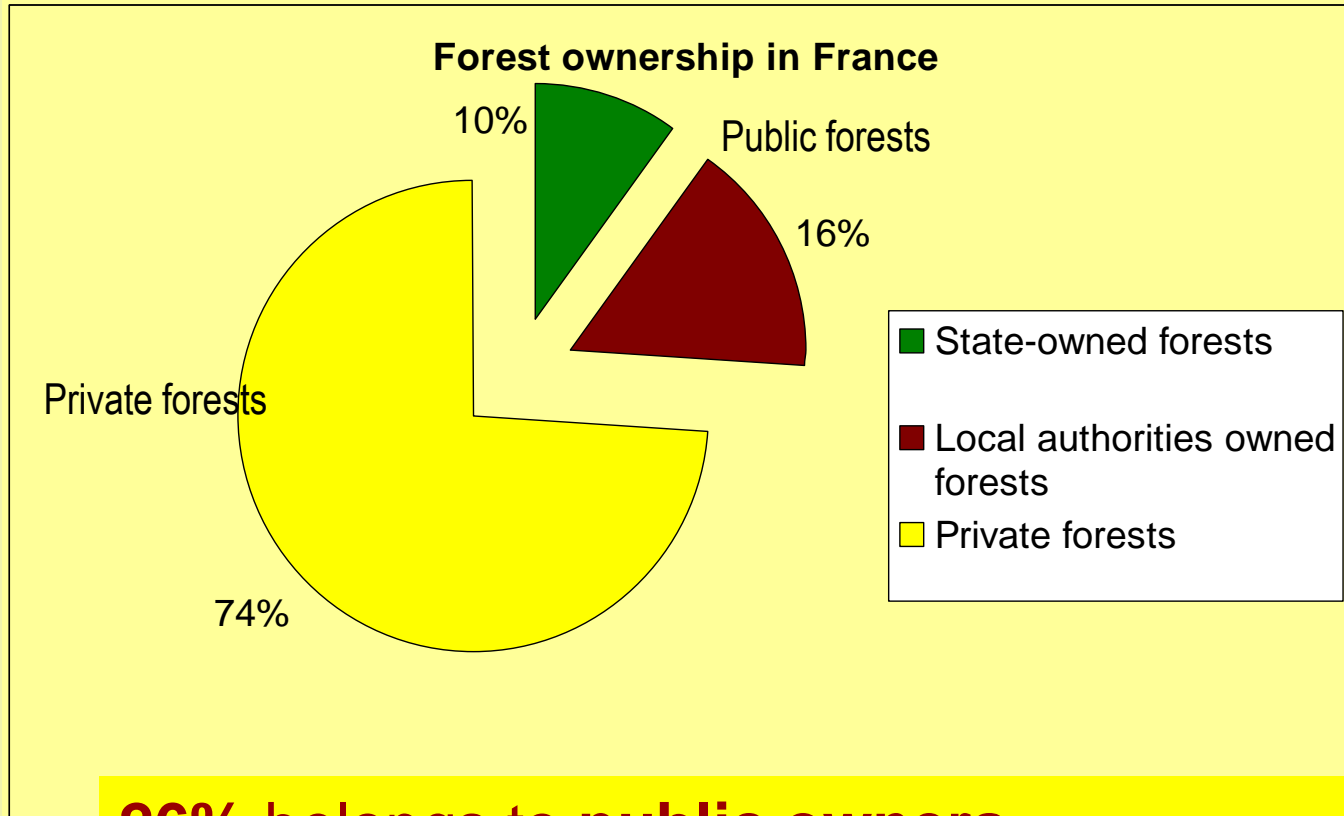
A bio-geographic diversity of forests



A majority of broadleaved stands

A few key points about French Forests

Ownership



The National Forestry Office (ONF)

- A State controlled agency (10 000 employees)
- In charge of the planning and management of French public Forests
 - 1.8 Mha of State-owned forests
 - 2.8 Mha forests owned by local authorities (defined by the Forest law)
 - 8 Mha overseas (French Guiana, Guadeloupe, Martinique, Réunion)
- Assignments relating to general Interest : protection against fires or erosion, dunes management...



- Certifications :
 - PEFC (sustainable forest management)
 - ISO 14001 (environmental policy)-ISO 9001 (quality)

The National Forestry Office (ONF)

- **Delivery of competitive and commercial services in France and abroad**

Multiple skills :

Forest and natural areas management, environmental issues (biodiversity, carbon sinks...), risk prevention plans, landscape and forest recreation, timber and wood fuel production...

Expertise, planning and management, forest work, training...

[http:// www.onf.fr](http://www.onf.fr)

- **ONF international**

<http://www.onfinternational.org/>



Public forests management

A sustainable multifunctional management



Environmental



Economy



Social

38% State forest area in Natura 2000

13 Mm³ produced in public forests (6 Mm³ in state-owned forests)

> 500 M visits in french forests (≅ 50% in state owned forests)

A long term planning and management document ...



for each public forest

Public forests management

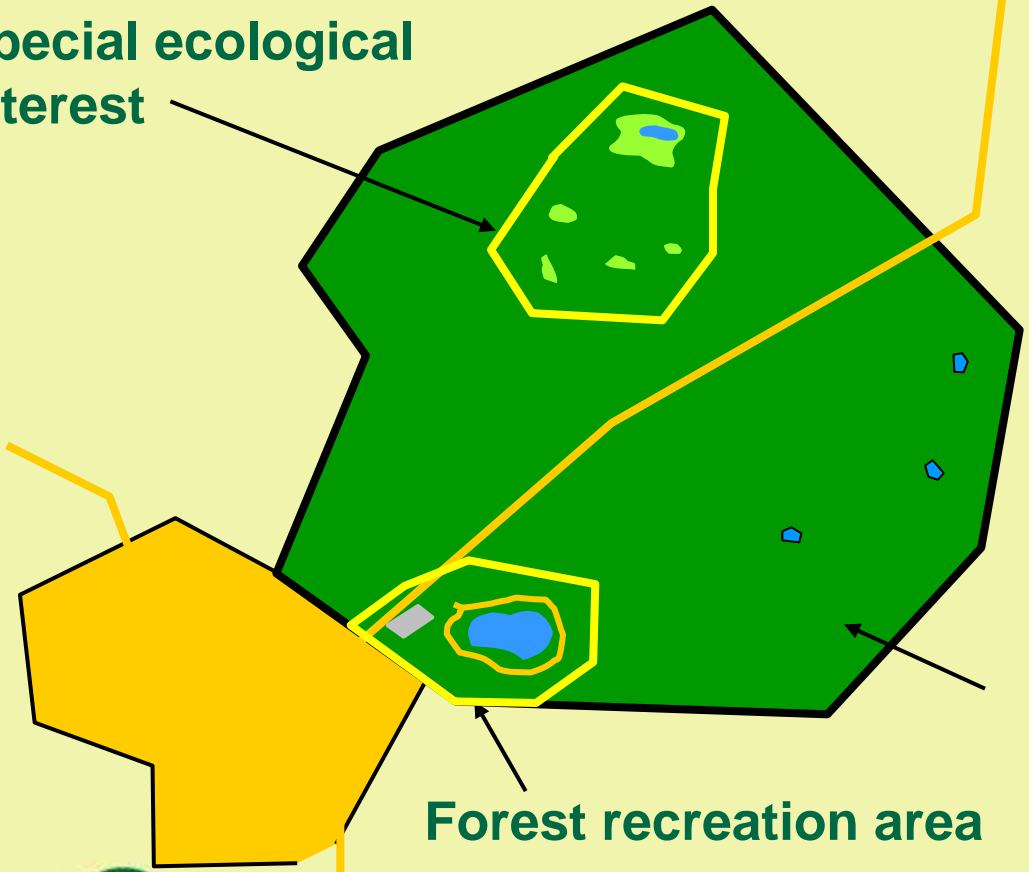
Planning Process

Analysis

Hierarchy of stakes

Multifunctional management
Areas with different priorities

Special ecological interest



Timber production

Forest recreation area



Urban public forests

Forests under the influence of the city



State forests
near Paris

medium
sized towns
(Limoges)



Urban – periurban
29% of State Forests
Patrimonial assesment, ONF 2006



But functioning forest ecosystems



Urban public forests

Environmental, social and economic values

Biodiversity
Landscape
Quality of life
Recreational activities
Renewable resources
Health
Education ...
House pricing



Specific priorities



Urban public forests

But a high level of pressure to be controlled

Competition for land use (urbanization, infrastructures...)

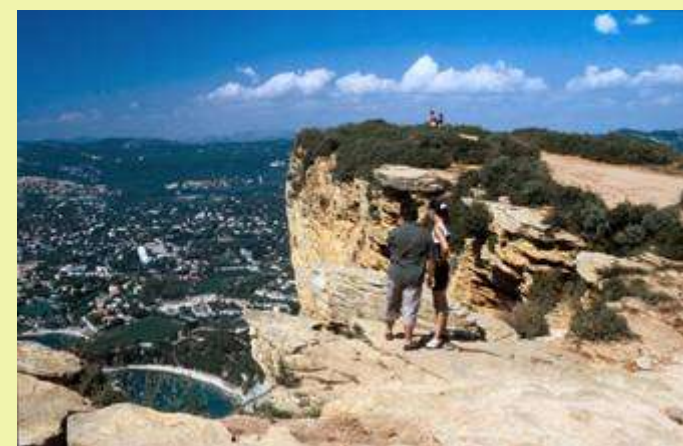
Pollution

Noise

High number of visitors

Inappropriate behaviour

...



Public urban forest management

Aims of the management

- Preserve and control the long term existence of public urban forests
- Implement a multifunctional management (specific priorities for urban forests)
- Answer social demand of nature (landscape, quality of life, recreation facilities, nature proximity)

Develop connections between the forest and the surrounding urban territory (policies and management)

**A global view
Participation**

Public urban forest management

- Preserve and control the long term existence of public urban forests
 - **Avoid land use changes**
 - Forest law
 - Urbanism regulations
 - Special status “**Forêt de Protection**”
 - **Control inappropriate behaviour** (forest limits, fire lighting...)
 - **A need to involve** local communities, stakeholders and the population



Public urban forest management

Implement a multifunctional management

- Forest recreation planning



Forêt communale de La Bastide Limoges



Public urban forest management

Implement a multifunctional management

- **Preserve the quality and functionality of the forest ecosystem**
 - **Limit car traffic inside the forest**
 - **Reduce visitors impact on sensitive areas**
 - **Regulations** : access, activities
 - **Agreements** : users groups, good practices
 - **Management** : channelling visitors

Regulation

Agreements
Information
Education

Channelling
visitors



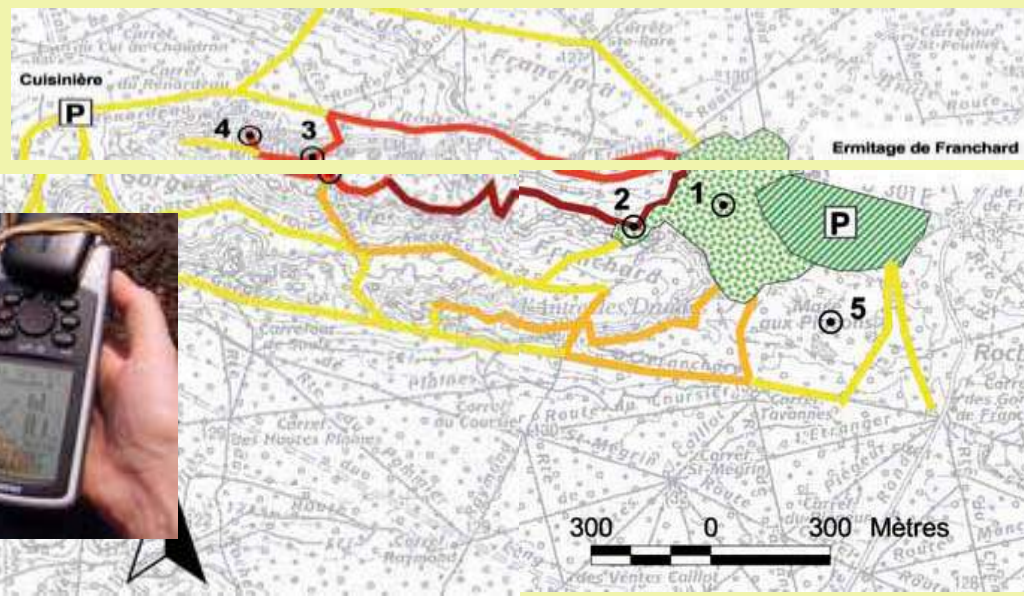
F. Blanc, 2006

Preserve the quality and functionality of the forest ecosystem

Fontainebleau (Franchard)



Sensitive sites



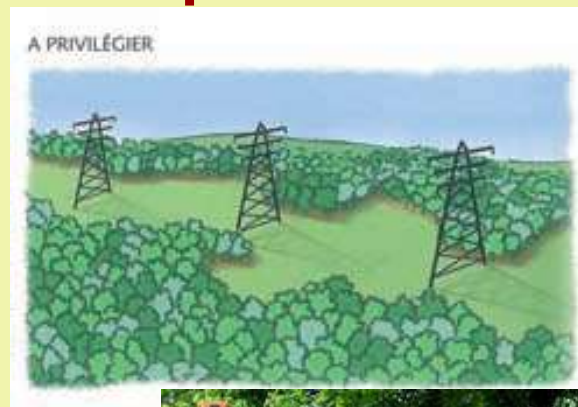
From the European project PROGRESS

Urban Forestry in French Public Forests ONF

Public urban forest management

- **A need to adapt the silviculture ...**
 - **A need to regenerate the forest, but a difficult challenge**
 - **Safety in areas managed for the public**
 - **Landscape**
 - **Renewable resources**

- **... And explain what will happen**



Answer social demand of nature

Parks

Urban green areas



Symbolical values of
the forest must be
preserved in recreation
management

**Useful and
complementary
areas**

Immaterial attributes
*Nature, Silence, Slow
rhythms,
Freedom feeling
Childhood memories...*



**A too much urban looking area is not
considered as a forest**

Urban and periurban forests

From research results (ONF- Université de
Caen-Cemagref)

Governance, participation, information, communication

A special importance in Urban and peri urban forest management

- A need to involve local communities all along the planning and management process
- A need to develop agreements with local stakeholders and users groups
- A need to develop information and communication towards the general public

Governance, participation, information, communication

- **Forest charter** (launched by the forest law 2001)
- « **Forêt Patrimoine** » a network for emblematic representative French State-owned forests
- **Forest participative structures** (Comité de massif)



Governance, participation, information, communication

- Good practices agreements with specific user groups
- Involve the general public





Rousseau./ Thierry Moignieu ONF 2005 / de signes associés / C.Vigan